

Home-based Rehabilitation Technologies for Stroke Patients: A Cross Systematic Review

Arushi Tandon¹

Abstract

Background: Many forms of home-based technology targeting stroke rehabilitation have been devised and a number of human factors are important to their application, suggesting the need to examine this information in a comprehensive review.

Objective: The systematic review aims to synthesize the current knowledge of technologies and human factors in home-based rehabilitation technologies for stroke.

Methods: A systematic literature search has conducted in three electronic databases (IEEE, ACM, PubMed), including secondary citations from the literature search. Articles that used technological means to help stroke patients conduct rehabilitation at home, reported empirical studies that evaluated the technologies with patients in the home environment and were published in English.

Results: The search yielded 832 potentially relevant articles, leading to 31 articles that were included for in-depth analysis. The types of technology of reviewed articles included games, telerehabilitation, robotic devices, virtual reality devices, sensors, and tablets with the merits and limitations of each type of technology. Then derive two main human factors in designing home-based rehabilitation technologies for stroke: designing for engagement (including external and internal motivation) and designing for the home environment (including understanding the social context, practical challenges, and technical proficiency).

Conclusion: This systematic review presents an overview of key rehabilitation technologies and human factors for designing home-based technologies for stroke patients.

Keywords: stroke rehabilitation; home-based; technologies; evaluation; systematic review

Introduction

Stroke is a leading cause of serious and long-term disability in the United States¹. After the initial days-weeks of inpatient treatment at an acute care then inpatient rehabilitation facility, patients with stroke still have a long and tedious recovery process in front of them, involving return of physical, speech, cognitive, and other functions. With the advance of information technologies (IT), numerous studies have investigated the feasibility and effectiveness of new IT tools and their design towards the purpose of facilitating rehabilitation after stroke²⁻¹². For example, systematic reviews have examined the outcomes of robot-assisted therapy²⁻¹⁰. Telerehabilitation, which allows patients to conduct therapy with therapists using telecommunication technology, has been widely deployed for stroke recovery in a number of reviews^{10,11,13}. Virtual reality has also been used in post-stroke therapy, and researchers have systematically studied clinical effects of commercially available virtual reality games¹², the effectiveness of virtual reality therapy in upper limb motor functions¹⁴, balance control and gait^{15,16}, lower limbs¹⁷, and walking¹⁸.

In parallel, there has been an increasing amount of work that leveraged information technologies to help patients conduct rehabilitation *at home*. Home-based technologies have the advantage of providing flexibility of location and time in rehabilitation therapy and remotely receiving feedback from therapists. However, to the best of our knowledge, a systematic literature review on information technologies for stroke rehabilitation in the home environment has not been published previously. Further, most systems and studies evaluate the success of a system by the clinical outcome^{4,9} such as motor and functional abilities¹⁷. However, use of rehabilitation technologies in the home environment, independently, is a complex process, and very few works have systematically addressed *patients' requirements* – beyond clinical requirements – in designing IT tools for stroke rehabilitation¹¹. At this end a systematic review of information technologies that are designed to help stroke patients by rehabilitation at home conducted. The primary goals were to understand 1) the types of technologies used for home-based rehabilitation after stroke and 2) design requirements for such technologies.

Methodology

Search Strategy

Keywords, databases, and search strategies were iteratively selected based on review of current systematic review articles. A systematic literature search conducted from January 2007 to April, 2018, in the following three electronic databases: PubMed, ACM Digital Library and IEEE. The search strategy included three types of keywords: stroke rehabilitation, home-based and technologies. These keywords needed to appear in conjunction in the title, abstract, or full text of the article. Duplicate citations were removed across databases using Zotero and conducted a manual revision for verification.

Inclusion and Exclusion Criteria

Studies published in peer-reviewed journals and conference proceedings in English were included. The technologies needed to be directly related to stroke rehabilitation at home. The studies had to be conducted at patients' homes and based on an empirical design. Systems that were not evaluated, only evaluated in the laboratories or clinical setting instead of the home environment or evaluated in healthy adults were not included in the review. If a study was reported in more than one article and presented the same data, the most recent publication only included. However, if new data were presented in multiple articles describing the same study, all were included.

Screening and Data Extraction

All titles and abstracts of all articles identified through the search strategy. Then independently reviewed the full text of pre-selected articles and agreed on the final set of articles through discussion.

Data Synthesis and Analysis

An abstraction template and a data dictionary were developed by consensus and iterative review of the team, including year of publication, country, technology used, study design, participants, measurements, and main findings (Tables 1-4). The articles coded according to the categories in the template. Quality of studies was not considered in these analyses.

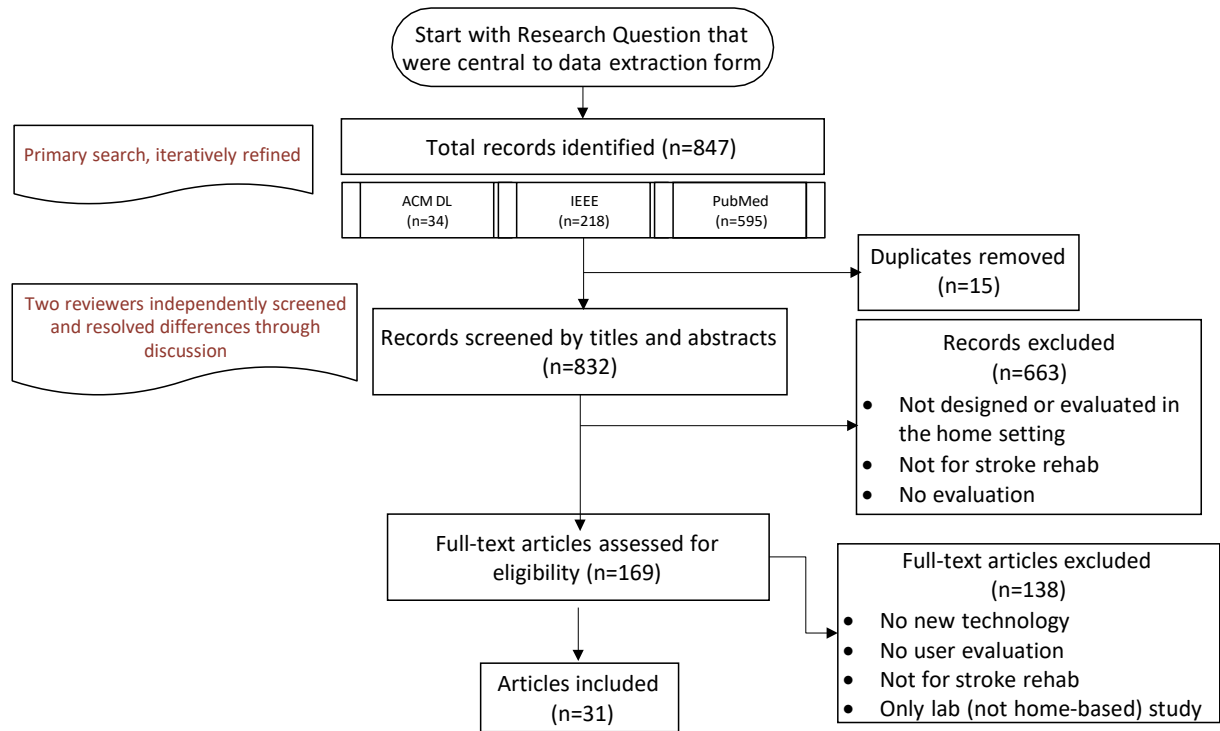


Figure: 1. Flow diagram of the Screening Process

Results

Included studies

In total, 847 articles identified: 34 articles from ACM, 218 from IEEE, and 595 from PubMed for a full-text review (Figure 1). After removing duplicates, the initial set consists of 832 articles. Among them, 169 were chosen as highly relevant by two reviewers. In the end, 31 articles with 25 systems were analyzed in detail (Table 1).

General overview

The included articles were published between 2004 and 2017. They represented 25 projects: 14²²⁻³⁶ conducted in the United States, 12³⁷⁻⁵³ in Europe (including the United Kingdom, Sweden, Italy, Switzerland, Netherland), 1⁵⁴ in New Zealand, and 1⁵⁵ in China. The following types of technologies emerge in the articles: games (14 projects), telerehabilitation (8 projects), robotic devices (7 projects), virtual reality (6 projects), wearable sensors (4 projects), and tablets (2 projects). Each project leverages one or more types of technologies. Among the selected projects, 12 adopted a quantitative design, 2 used a qualitatively method, and 11 used a mix of quantitative and qualitative approach.

Technologies

In this subsection, we present the definitions, projects, benefits and limitations of commonly used technologies in home-based stroke rehabilitation systems

Games

Conducting rehabilitation through playing games makes the repetitive exercises more engaging and motivating. A total of 14 projects^{23,24,26,29,31,35,37,40,42,46,49,50,53,54} deployed games for home-based stroke rehabilitation systems. Among them, two projects⁴² leveraged general commercial games not specifically designed for rehabilitation (i.e., Nintendo Wii Sport⁴⁰, Sony PlayStation 2²⁹).

The main advantages for using commercial games are the acceptability and affordable prices, but they may not contain sufficient guidance for, or measurement of, the movement and position of the arms, hands, and fingers to serve accurate and useful therapeutic purposes.

Meanwhile, the other 13 projects developed games specifically for stroke rehabilitation purposes to offer adaptive and personalized exercise programs. To effectively detect and track patient movement in the exercises, such games usually integrate robotic devices or motion sensors, such as Wii mote⁴⁰, Kinect⁵⁰, ArmeoSenso⁵³.

Designing stroke rehabilitation games provides more targeted exercises for patient recovery and for therapists to evaluate the progress than general commercial games, but might require technical training and learning progress for patients to adopt new games.

Telerehabilitation. Telerehabilitation^{23,27,32–34,52,55}, also referred to as tele-therapy or tele-stroke, uses information and telecommunication technologies, such as telephone and video conferencing, to help patients receive medical services from health providers remotely^{23,52}. The technical functionalities of telerehabilitation is usually achieved through video conferencing and includes the capability for therapists to observe patients' movement when executing rehabilitation tasks. Telerehabilitation has the potential to reduce the duration of inpatient hospitalization by helping patients conduct rehabilitation at home, and thus reducing costs^{52,55}. Telerehabilitation is particularly useful for stroke patients who are underinsured, have difficulty with transportation, depend on caregivers, or lack stroke rehabilitation services in their geographic areas²³.

Researchers have also identified a number of limitations for using telerehabilitation for stroke recovery⁵¹, such as the lack of physical interaction between patients and therapists and in some instances the requirements for technical proficiency to use the telerehabilitation services. Moreover, key policy challenges with home-based telerehabilitation are yet to be fully understood, e.g., the cost, reimbursement, privacy, liability, and system security²³.

Robotic Devices^{23,28,32,36,37,46,47} replace, or in some cases augment, manual rehabilitation provided by healthcare professionals with automated motor assistance. The robotic devices mainly aid the movement of the arm, wrist, and hands to improve the active flexion and extension range of motion.

Robot-assisted therapy that uses an exoskeleton approach may provide similar or additional benefits for hand motor function in comparison with conventional therapy in patients with chronic stroke⁵⁶, though uncertainty remains regarding the effect size of such treatment approaches.

A variety of robotic devices were used, such as robotic arms³⁷ and robotic exoskeleton system²⁸. Some integrated commercial robotic devices, e.g., Saebo Mobile Arm Support (SaeboMAS)⁴⁶, Haptic Master⁴⁷, Hand Mentor Pro (HMP)²³, Hand Mentor³², and Myomo mPower 1000³⁶. Robotic devices automate therapy procedure and generate a wide variety of forces and motions for training²⁸. Another benefit of robotic devices⁵ is to deliver measurable and optimal dose and intensity for intensive therapy²³.

Despite the benefits, robotic devices usually require large physical space in the living environment and sometimes appropriate facilitates such as tables and chairs for setup. This is particularly challenging for participants living in a crowded space³². Some robots generate large forces at times that can create theoretical safety concerns when used unsupervised in the home.

Virtual Reality^{28,29,40,52–54} devices use computing technologies to provide virtual environment that simulates the physical environment. Virtual reality has emerged as a recent approach for providing stroke rehabilitation therapy⁴⁰. Virtual reality devices are usually designed as interactive games or virtual exercises. For example, the Virtual Glove⁴¹ provides games that require rehabilitative movement of the hand to navigate through obstacles and interact with a virtual balloon, and of the fingers to release a ball to hit a target. Other virtual reality systems transform rehabilitation exercises into tasks in the virtual space. Piron et al.⁵¹ reported a system that transformed therapist's tasks (e.g., pouring water and using a hammer) and the patient moved the real object following the trajectory of the corresponding virtual object displayed on the screen. Similarly, the other training systems^{28,53} designed pointing task training that encourages patients to reach virtual targets with their impaired arm.

Overall, virtual reality provides patients a safe and controlled virtual environment that might later be applied to a real-life context. Patients can practice and receive feedback about their activities²⁹ without having to worry about mistakes. However, the challenge lies in validating the clinical outcome of solely using virtual reality devices, particularly those not specifically designed for rehabilitation. Also, sensory feedback, so critical to brain plasticity and rehabilitation therapy gains, can be altered or reduced with virtual reality approaches.

Sensors^{39,46,53,55} are usually deployed to measure patients' exercise movement and provide feedback. In addition to sensors commonly used in commercial games, such as Kinect^{26,35,50} and Wiimote^{31,41,42}, a wide range of other sensors have been investigated. For instance, the system Rehab Reader³⁹ leveraged squeeze sensor to help stroke patients practice squeezing while reading novels and the system Chess³⁹ motivates patients to squeeze while playing the chess. In the SCRIPT project⁴⁶ used several sensors to measures finger flexion, wrist angle, and velocity and orientation of the hand.

The ArmeoSensor system⁵³ leveraged three sensors to measure acceleration, angular velocity and the magnetic field in three dimensions. Besides the above mentioned motion sensors, physiological sensors have been deployed to record body temperature, respiratory rate, pulse rate, blood pressure, etc. during the therapy process⁵⁵. Measuring and quantifying patients' exercise movement in the home environment is beneficial when the physical help from a therapist is absent. Patients' performance of therapeutic exercises recorded by sensors could provide suggestions for patients and patient-therapist communication. Key challenges of using sensor based technologies for home rehabilitation is to minimize the obtrusiveness of sensors⁵⁵ and validate the accuracy of home-based exercises⁴⁶.

Tablets^{38,39} mainly refer to mobile devices such as tablet PCs and iPads. Digital Music Instruments³⁷ leverages an iPad app to sync users' performance when using the digital drum pads to exercise the hand and the arm. In Rehab Reader³⁹, a tablet PC was used to help patients conduct exercises while reading novels; and the Ball Funnel³⁸ system used a tablet PC to display the exercises to patients. Tablets provide a commercially available and relatively affordable form of technology that allows users to directly interact with and connect with sensors⁵⁷. Post-stroke impairments such as visual field loss or motor deficits might be barriers for stroke survivors to interact effectively with tablets⁵⁷.

User Studies

The details of the study length, study design (quantitative, qualitative, or mixed-methods), number of participants, and participant demographics are listed in Appendix B. The majority of studies employed a quantitative research design (N=12)^{27,33-37,40,47,52-55}. The systems were mostly evaluated by controlled studies, sometimes named as feasibility study or random controlled trial in the articles.

Participants first received a pre-study evaluation of their physical functionalities with a given set of measurements, used the systems for a designated period of time, and then received another set of measurement during and after the system usage. Two studies adopted a qualitative design to evaluate the subjective feedback of the systems^{24,32,39}. A mixed methods design that combines both quantitative and qualitative evaluation was used in 10 projects^{23,26,28–30,38,43,46,49,50}.

Study Findings

Overall, the quantitative and qualitative findings of the studies show that home-based technologies offered unique opportunities and benefits to deliver rehabilitation to patients at home. First, some studies found that users had improved motor skills after the intervention^{24,27–30,33–35,37–40,46,48,53,54} and that home-based rehabilitation technologies offer equivalent quality as conventional therapies⁵⁵. In the 12-week study by Chen et al.⁵⁵, both the home based telerehabilitation and conventional rehabilitation groups demonstrated significant effects within groups with three time points in increasing Modified Barthel Index, Berg Balance Scale. In the HAAPI project, Wolf et al.²³ compared the efficacy between Hand Mentor Pro only and that integrated with telemonitored robotic-assisted therapy.

In an eight-week trial with 99 participants randomly assigned to one of the conditions, they found both groups demonstrated improvements across all upper- extremity outcomes. A two-week study by Carey et al.³⁴ comparing telerehabilitation with repetitive tracking movements and simple movements with 20 participants found that the participants in both conditions showed significant improvement in the Box and Block and Jebsen Taylor tests while participants in the tracking group improved significantly in Box and Block test, Jebsen Taylor test, finger range motion, and finger-tracking activation paradigm during fMRI.

However, some studies did not show significant difference between technology-supported and conventional rehabilitation. For example, Adie et al.⁴² used a mixed method to study Nintendo and Wii sports for 6 weeks with 240 participants (122 in experiment group and 118 in control group). No significant difference was found in the primary or secondary outcome of affected arm functions at six weeks follow-up. Wii was not superior to arm exercises in home-based rehabilitation for stroke survivors with arm weakness.

Qualitative findings also show that patients demonstrated observable improvement in physical performance and the activities of daily living^{32,38}. For example, in Balaam et al.'s study, some participants reported visible improvement in finger control, elbow and shoulder movement³⁹. In a study by Kirk et al., some participants could transfer physical improvements into daily tasks, such as "putting on socks easier" and "dressing easier³⁸." Second, some studies reported participant perceived improvement in cognitive abilities^{32,38,39}, such as being able to "remember stuff³⁸" and improved "levels of concentration³⁹."

Third, some participants felt the system helped reduce their social isolation. In a case study³⁰, since the patient started to use the system, her grandson observed her playing the games and joined the game, and they started to play together more often. Last but not least, participants reported a sense of control over their rehabilitation and appreciated the flexibility of scheduling^{32,50} the day and time to exercise⁵⁰.

Meanwhile, qualitative findings also reveal two practical factors to consider in designing home-based rehabilitation technologies: patients' physical space and technical proficiency. Studies suggested the importance of selecting a place for training, such as placement of furniture and lighting condition⁵⁰. Sometimes the size and placement of the rehabilitation system³² made it difficult for some patients and their family members to move around the home. Patients might discontinue using the systems that take too much space in the home³⁸.

Patients and therapists also experienced frequently encountered technical problems, such as using a motion tracking system⁵⁰, following the necessary steps to shut down a system, and charging the system battery²⁴. Particularly, it is most crucial to provide technical support in getting started with the system. Some patients needed technical assistance from family members at home or therapists over telephone⁵⁰. In some projects, researchers have considered the potential technical issues and intentionally spent more time in the sessions in the first week to avoid technical issues⁵⁴.

Discussions

A few studies also summarized challenges of designing technologies for the home environment, which is different from the clinical context³⁹. First, in the clinical environment, therapists use standardized approaches to guide patients through therapy and to motivate patients to engage in rehabilitation therapy; in the home environment, however, the physical absence of therapists often leads to a lack of structured sessions and so reduced patient engagement in rehabilitation. Therefore, engaging patients in exercising in the home environment remains a challenge. Second, treatment in the clinical environment is able to focus in a patient's functional needs and recovery; by contrast, home-based therapies require additional consideration of a broader range of complex factors such as patients' home environment, social context, and life experiences. Therefore, home-based therapies carry the need to consider the patients' requirements, such as the social environment in which the patient lives, practical challenges of daily lives, and their skill in use of various technologies. Based on the technology design and the study findings, we summarized the following factors that were considered crucial for designing home-based rehabilitation technologies.

Design for engagement

Different from clinical based rehabilitation sessions that are guided by healthcare professionals, home-based therapies require patients to regularly conduct exercise by themselves. In order to provide engaging rehabilitation exercises, which could be repetitive and difficult for patients, studies have integrated both *external* motivation to provide entertaining and fun experience and *internal* motivation to adapt to patients' progress.

External motivation.

The most commonly used external motivation is to integrate virtual reality and games make the repetitive rehabilitation exercises fun and entertaining^{23,24,26,29,31,35,37,40,42,46,49,50,53,54}. However, the motivational effect of games might wear off over time²². Some studies address this issue by increasing the *variability* of games and by adapting the game difficulty over time or meeting individual needs with consideration of a person's physical and mental levels of functioning⁵⁰. For example, one article presented the design of different systems intended to meet each patient's individual personal interests, such as reading, playing chess, and having quality time with family members³⁹.

Internal motivation. The internal motivation aims to encourage patients with their progress. As patients begin to see improvements, the motivation shifts from external to internal motivation of expecting the system to support personal goals. A number of projects indicated that participants were most willing to conduct rehabilitative exercises when they see their progress^{32,38}. When patients achieve progress over time, systems may further motivate patients by adapting the exercises to the right levels, such as increasing the length of each session and the intervention duration²⁴ and tailoring their personal rehabilitation goals^{22,26}. Of course, these approaches are of less value if a patient is not making progress over time.

However, there is no definite boundary between external and internal motivation. When introducing game elements to encourage exercise and progress in tele-rehabilitation, elements such as badges and milestones can be considered as external motivation, but the progress associated with these virtual milestones can be considered as internal motivation. Furthermore, when patients share their progress with therapists or family members, the internal motivation might become external as well. In actual usage of the systems, whether a particular element of system design is used as internal or external motivation is dynamically changing based on patients and conditions when using the system. While it is hard to cut a clear line, system designers, developers, and other stakeholders should consider both internal and external motivation to engage patients to take an active role.

Design for the Home Environment

Social context.

Since patients usually live in the family environment, the system needs to be acceptable both to the patients and other members in the family^{32,39}. For example, one study emphasized the role of caregivers in stroke recovery³², while another, using the Ball Funnel rehabilitation system, allowed the patient to play games with her son³⁹. A case study²² indicated that incorporating activities that allow participants to compete with family members might facilitate compliance and reduce patients' social isolation³⁰. Therefore, it is necessary to consider the family and social environment when patients conduct therapy exercises at home.

Practical challenges.

It is crucial to consider the practical challenges of patients and their families, e.g., time management and space requirement. Time management has been reported as a concern for patients who are assigned rehabilitation therapy sessions daily, e.g., five days per week²⁶.

Patients occasionally reported difficulties with fatigue and physical pain and found it more difficult to engage with the game when they are tired^{24,41,58}. Besides time and life factors, studies also suggest considering the requirements of physical space, such as space requirements, placement of furniture, lighting condition⁵⁰.

Technical proficiency.

In contrast to the clinical environment, where medical devices are operated by healthcare professionals, home-based technologies generally require a patient to operate a system without help. Therefore, it is imperative that patients are able to use a rehabilitation system without technical barriers. Helping patients overcome technical barriers is emphasized in a number of projects^{22,24,41,50}. Particularly, it is most crucial to provide technical support in getting started with the system.

	N	%
Technologies used (25 systems)		
Games	14	34
Telerehabilitation	8	20
Robotic devices	7	17
Virtual reality	6	15
Sensors	4	10
Tablets	2	5
Types of evaluation (25 systems)		
Quantitative	12	48
Qualitative	2	8
Mixed of quantitative and qualitative	11	44

Table 1: Summary of the 31 included articles and projects

Technologies	Benefits	Limitations
Games	Makes repetitive exercises more engaging and motivating	General commercial games might not be tailored for rehabilitation purposes
Telerehabilitation	Provide flexibility for patients who were underinsured, having difficulty with transportation, dependent on caregivers, or lacking stroke rehabilitation programs in their geographic areas ²³ .	Lacks of physical interaction between patients and therapists; Requirements of technical proficiency to use some telerehabilitation services; Uncertainties regarding policy challenges, e.g., the cost, reimbursement, privacy, liability, system security ²³ .
Robotic Devices	Provide automating therapy procedure and generate a wide variety of forces and motions for training; Deliver measurable and optimal dose and intensity ²³ and providing repetitive practice for intensive therapy.	Sometimes require large physical space in the living environment; Sometimes need appropriate facilitates for setup; some robotic devices raise question of safety concerns when used unsupervised in the home.
Virtual reality	Provides a safe and controlled virtual environment that mimics the real clinical and daily life scenarios.	Challenge in validating the clinical outcome of using virtual reality devices that are not specifically designed for rehabilitation; sensory feedback, so critical to brain plasticity and rehabilitation therapy gains, can be altered or reduced with virtual reality approaches
Sensors	Serve as a measuring device to quantify the accuracy of patients' exercise movement. Patients' trajectory of therapeutic exercises recorded by sensors could serve as an effective means to provide suggestions for patients and patient-therapist communication.	Challenges in minimize the obtrusiveness of sensors ⁵⁵ and validate the estimation accuracy of home-based exercises ⁴⁶ .
Tablets	Provide a commercially widely available and relatively affordable form of technology.	Might be challenging for stroke survivors with certain impairments such as visual field loss or motor deficits.

Table 2: Different technologies

Project	Country	Year	System name	Technology	Study type	Length of intervention	#participants (who completed study)	Time since stroke before the study
P1 (Sivan et al. 2014 ³⁷)	UK	2014	hCAAR	Robotic device games	Quantitative	8 weeks	19 (17 completed)	> 1month
P2 (Kirk et al. 2016 ³⁸)	UK	2016	Digital musical instruments	Tablets Sensors	Mixed	5 weeks	3	> 11 months
P3 (Balaam et al. 2011 ³⁹)	UK	2011	Rehab Reader, Chess, Exercise Instructor, Ball Funnel	Tablet PC; sensors Tablet PC; sensors; sensors	Qualitative	7 months, 6 weeks 4 weeks 7 weeks	4 (1 participant per system)	4 years, N/A 3 years, N/A
P4 (Standen et al. 2015 ⁴¹ , Standen et al. 2017 ⁴⁰)	UK	2015 2017	Virtual Glove	Virtual reality Sensors Games	Mixed	8 weeks	27 (17 in intervention group, 9 completed, 10 in control group, 9 completed)	Median: 22 weeks in intervention; 12weeks in control
P5 (Adie et al. 2017 ⁴² , Wingha	UK	2015 2017	Nintendo Wii Sports Wiimotes	Sensors Games	Mixed	6 weeks	240 (118 in control, 102 completed at six weeks, 97 completed six	Within the previous 6 months

m et al. 2015 ⁴³)							months; 117 in intervention, 102 completed)	
P6 (Nijenhuis et al. 2015 ⁴⁴ , Nijenhuis et al. 2017 ⁴⁶)	UK, Italy, Netherlands	2015 2017	SCRIPT (Supervised Care and Rehabilitation Involving Personal Telerobotics)	Robotic device Games	Mixed	6 weeks	24 ⁴⁴ 20 ⁴⁶ (10 in control, 10 in intervention)	Chronic
P7 (Lemmens et al. 2014 ⁴⁷)	Netherlands	2014	Haptic Master and Actiwatch	Robotic device	Quantitative	8 weeks	16 (8 in control, 8 in Haptic Master intervention group)	Chronic
P8 (Backlund et al. 2011 ⁴⁸ , Slijper et al. 2014 ⁴⁹)	Sweden	2011 2014	Elinor	Games	Mixed	5 weeks	5 ⁴⁸ ; 12 (11 completed) ⁴⁹	Chronic (>11 months)
P9 (Palmcrantz et al. 2016 ⁵⁰)	Sweden	2016	DISKO-tool	Games Kinect sensor	Mixed	3 weeks	15 (14 completed)	All stages of continuum (1-115months)
P10 (Piron et al. 2008 ⁵²)	Italy	2008	N/A	VR Telerehabilitation	Quantitative	4 weeks	10 (5 in Tele-VR at home, and 5 in VR inhospital setting)	> 12 months

P11 (Wittmann et al. 2016 ⁵³)	Switzerland	2016	ArmeoSensor	Games VR Sensor	Quantitative	6 weeks	11	5 months
P12 (Jordan et al. 2014 ⁵⁴)	New Zealand	2014	N/A	Games VR	Quantitative	4-6 weeks	13 completed, 11 took the final assessment)	> 6months
P13 (Chen et al. 2017 ⁵⁵)	China	2017	N/A	Telerehabilitation	Quantitative	3 months	54 (27 intervention group, 27 in control group, 26 completed) 54(27 telesupervising intervention group, 24 completed; 27 in control group, 26 completed)	14 to 90 days fromstroke onset
P14 (Wolf et al. 2015 ²³)	US	2015	HAAPI Hand Mentor Pro	Games Robotic device Telerehabilitation	Quantitative	8 weeks	99 (51 in HMP+HEP group, 47 completed; 48 in HEP group, 45 completed)	Within 6 months

P15 (Brown et al. 2014 ²⁵ , Brown et al. 2015 ²⁴)	US	2014 2015	NeuroGame Therapy	Games, telerehabilitation	Mixed	4 weeks, 45min, 5days/week	12 (9 Completed); 10	>6months
P16 (Proffitt et al. 2015 ²⁶)	US	2015	Mystic Isle	Games Virtual realitySensor	Mixed	6 weeks	4	>6months
P17 (Langan et al. 2013 ²⁷)	US	2013	N/A	Telerehabilitation	Quantitative	6 weeks	7	Chronic stage
P18 (Zhang et al. 2011 ²⁸)	US	2011	RUPERT	Robotic deviceVR	Mixed	4 weeks	8 (2 in the home setting; 6 in the clinic setting)	>6months

P19 (Flynn et al. 2007 ²⁹)	US	2007	Sony PlayStation 2 (PS2) EyeToy	Games VR	Mixed	4.5 weeks	1	17 months
P20 (Alankus et al. 2010 ³¹ , Proffitt et al. 2011 ³⁰)	US	2010 2011	N/A	Games Virtual reality	Mixed	6 weeks	1	17 years
P21 (Cherry et al. 2017 ³²)	US	2017	N/A	Robotic device Telerehab	Qualitative	3 months	10	Different stages
P22 (Holden et al. 2007 ³³)	US	2007	N/A	Telerehab VR	Quantitative	6 weeks	12	>6months
P23 ³⁴ (Carey et al. 2007)	US	2006	N/A	Telerehab	Quantitative	2 weeks for track and move group, 2 additional weeks for the move group	20	>12months
P24 (Brokaw et al. 2015 ³⁵)	US	2015	HAMSTER	Games VR	Quantitative	1 months	1	13 months
P25 (Kim et al. 2015 ³⁶)	US	2015	N/A	Robotic devices Sensors	Quantitative	6 weeks	9	>6months

Table:3. Home-based rehabilitation system and study design

Project	Measures	Measures taken	Main findings
P1 (Sivan et al. 2014 ³⁷)	Fugl Meyer Upper Extremity motor subscale (FM-UE), Action Research Arm Test (ARAT), Medical Research Council (MRC) and Modified Ashworth Scale (MAS), Chedoke Arm and Hand Activity Inventory (CAHAI), ABILHAND	A0: beginning A1: after 8 weeks A2: after 1 month	The kinematic and clinical outcomes significantly improved after 8 weeks. Three participants showed clinically significant improvement in all the clinical outcomes.
P2 (Kirk et al. 2016 ³⁸)	Arms lengths reach test, range of movement (ROM) in the armL shoulder ROM, elbow flexion, wrist extension, wrist flexion Time on tasks, other physical and psychological measures	A1: pretest A2: posttest (5 weeks after system use) A3: 3 months post intervention	Participants demonstrated significant increase in self-management and functional measures and reduction in time on tasks. Participants reported transferring physical improvements into tasks of daily living and enhanced memory.
P3 (Balaam et al. 2011 ³⁹)	N/A	N/A	It is essential to design technologies that motivate individual patients, balances between work, duty and fun, support motivation over time, and understand the wider social context
P4 (Standen et al. 2015 ⁴¹ , Standen et al. 2017 ⁴⁰)	Wolf Motor Function Test, Nine-Hole Peg Test, Motor Activity Log and Nottingham Extended Activities of Daily Living	A1: baseline A2: after 4 weeks A3: final usage	Significant change from baseline in the intervention group on midpoint Wolf Grip strength and two subscales of the final Motor Activity Log. Participants found the games motivating to use, liked the family support; barriers of using the system mainly include: technical issues, dependency on someone to help with the device, health problems, competing commitments in life
P5 (Adie et al. 2017 ⁴² , Wingham et al. 2015 ⁴³)	Action Research Arm Test; Secondary outcome measures: Canadian Occupational Performance Measure, Stroke Impact Scale, Modified Rankin Scale, EQ-5D 3L	A1: pretest A2: (posttest) after 6 weeks A3: (follow-up) after 6 months	There was no significant difference in the primary or secondary outcome of affected arm functions at six weeks follow-up. Wii was not superior to arm exercises in home-based rehabilitation for stroke survivors with arm weakness.

<p>P6 (Nijenhuis et al. 2015⁴⁴, Nijenhuis et al. 2017⁴⁶)</p>	<p>Stroke Impact Scale, Fugl-Mayer Scale, Action Research Arm Test, Motor Activity Log⁴⁴ Action Research Arm Test, Intrinsic Motivation Inventory, Fugl-Meyer, Motor Activity Log; Stroke Impact Scale and grip strength⁴⁶</p>	<p>A1: pre test A2: post test (6 weeks later) A1: one week before A2: one week after training; A3: two months after training</p>	<p>Participants demonstrated improvement in Stroke Impact Scale. Patients found that their duties in the life and family could be a hinder to their usage⁴⁴. The control group reported a higher training duration; Perceived motivation was positive and equal between groups. Motivation during training was positive in both groups. Both groups showed moderate improvements on most clinical assessments. No demonstration of additional benefit of technology supported rehabilitation⁴⁶.</p>
<p>P7 (Lemmens et al. 2014⁴⁷)</p>	<p>Arm accelerometry data, FMMA, Action Research Arm Test (ARAT) and MAL</p>	<p>T0: baseline T1: 4 weeks after training T2: end of the 8 weeks training T3: 6 months after finishing the program</p>	<p>Duration and intensity of use of the affected arm-hand did not change significantly during and after training, with or without robot-support No significant between-group differences were found.</p>
<p>P8 (Backlund et al. 2011⁴⁸, Slijper et al. 2014⁴⁹)</p>	<p>National Institutes of Health Stroke Scale, measures of active moment, finger-nose test, Modified Ashworth test, Action Research Arm Test (ARAT), Assessment of motor and process skills, Motor Activity Log (MAL)⁴⁸ FMA-UE, ABILHAND, ARAT, Fugl-Meyer, grip force (GripitR) and ARAT, ABILHAND⁴⁹</p>	<p>A1: before experiment A2: 5 weeks after⁴⁸ A1: baseline B: during intervention once a week A2: post-test measure C: follow-up 16-18 weeks⁴⁹</p>	<p>Improvement in assessment of motor and process skills,; self-reported improvements in motor activity logs. Fun was perceived as positive for motivation and Elinor as a tool to engage family members also provided motivation⁴⁸. FMA-UE A-D (motor function), ARAT, the maximal grip force and the mean grip force on the affected side show significant improvements at post-test and follow-up compared to baseline⁴⁹.</p>
<p>P9 (Palmcrantz et al. 2016⁵⁰)</p>	<p>NIHSS, Birgitta Lindmark motor assessment, Modified Ashworth Scale, Berg Balance Scale, Functional Ambulation Categories, ontreal Cognitive Assessment, Barthel Index, EQ-5D VAS</p>	<p>A1: before the intervention</p>	<p>It is crucial to select a place at home for training, learn how to use the tool and how to perform the exercises, receive the training at the right level, receive real-time feedback of performance, resolve technical problems.</p>

P10	Fugl-Meyer UE	A1: pretest A2: posttest	The comparative study: patients in the Tele-VR group was equal to or higher than the VR group in all 12 measurements. In motor
(Pironal. et 2008 ⁵²)			performance, the Tele-VR group improved significantly, but not the VR group. Patients in the Tele-VR group were able to engage in therapy at home and the telerehab system helped establish a good relationship between the patient and the therapist.
P11 (Wittman n et al. 2016 ⁵³)	Self-selected dose of training with ArmeoSenso FMA-UE, WMFT, IMU-derived kinematic metrics	A1: before the start A2: after three weeks A3: after six weeks of training	Patients' arm function (FMA-UE) significantly improved significantly. Changes in the WMFT were not significant (p = 0.552)
P12 (Jordan et al. 2014 ⁵⁴)	Upper limb component of the FMA-UL, Intrinsic Motivation Inventory (IMI)	A1: after enrollment A2: 4 week after A1 A3: within 1 week of finishing intervention A4: 4 weeks after A3	An average increase in the FMA-UE after intervention.
P13 (Chen et al. 2017 ⁵⁵)	Modified Barthel Index, Berg Balance Scale, modified Rankin Scale, Caregiver Strain Index, root mean square of extensor carpi radialis longus and tibialis anterior muscle	A1: baseline A2: 12 weeks after A1 A3: 12 weeks after A2	Significant increase in Modified Barthel Index, Berg Balance Scale, and decrease in Caregiver Strain Index, but differences between groups was significant. For modified Rankin Scale, the percentage of participants of grades 0 and 1 in both groups increased, but no significant difference between the groups.
P14 (Wolf et al. 2015 ²³)	ARAT, WMFT, FMA	A1: pre test A2: post test	In the larger study, both groups demonstrated improvement across all upper extremity outcomes. Some participants found the system effective and adhered to the rehabilitation. Meanwhile, family and life role responsibilities occasionally hindered the compliance.
P15 (Brown et al. 2014 ²⁵ , Brown et al. 2015 ²⁴)	Duration of system use, sEMG, Wolf motor Function test, Chedoke Arm and Hand Activity Inventory	A1: about 8 weeks prior to system use A2: about 4 weeks prior to system use A3: immediately after completion of system use.	Participants demonstrated significant improvements in game play and sEMG outcomes. Participants found the system engaging and motivating, but observed minimal functional upper extremity improvement.

P16 (Proffitt et al. 2015 ²⁶)	FMUA, COPM, Balance Confidence Scale, Activities-Specific Balance Confidence Scale, Stroke Specific Quality of Life Scale	A1: before intervention A2: after 6 weeks (post-intervention)	Two participants reported an increased ability in the self-care domain on the Stroke-Specific Quality of Life scale; one participant had an increase in COPM satisfaction score.
			Participants enjoyed the games that tailored to help them achieve their goals and motivated by motor + cognitive challenges. They reported barriers in time management.
P17 (Langan et al. 2013 ²⁷)	WMFT, Groton Maze Learning test	A1: before intervention A2: after 6 weeks (post-intervention) A3: one month after A2	Improvements in clinical and kinematic assessments; movements of the more affected arm were smoother at post-testing and scores were more similar to those of the less affected hand; five participants demonstrated a reduction in streamlined WMFT performance; enhanced tactile discrimination performance in the less affected hand and trended towards improvement in the more affected hand; five participants demonstrated a trend toward improved cognitive performance in the Groton Maze Learning Test.
P18 (Zhang et al. 2011 ²⁸)	Wolf Motor Function Test, FMA	A1: before intervention A2: after intervention	The two patients in the home setting demonstrated functional improvement and significant increase in the movement smoothness on reaching some target.
P19 (Flynn et al. 2007 ²⁹)	Fugl-Meyer Assessment, Upper Extremity Functional Index, Beck Depression Inventory, Berg Balance Scale, Dynamic Gait Index, Mini-Mental State Exam, Timed Up and Go, Six-Minute Walk Test, Motor Activity Log Modified Ashworth Scale Functional Reach Test	A1: (pretest) before intervention A2: (midtest) after 10 sessions A3: (posttest) after 20 sessions A4: 6 months after intervention	Significance in Dynamic Gait Index and trends toward improvement on the Fugl-Meyer Assessment, Berg Balance Scale, UE Functional Index, Motor Activity Log, and Beck Depression Inventory. The participant purchased her own equipment and continued to play on a regular basis with her family members together.
P20 (Alankus et al. 2010 ³¹ , Proffitt et al. 2011 ³⁰)	Action Research Arm Test (ARAT) Activity Card Sort (ACS) Reaching Performance Scale (RPS)	A1: before the study A2: during the third week A3: during the sixth week	After three weeks, the participant demonstrated increased range of motion at the shoulder and decreased compensatory trunk movements during reaching tasks. After six weeks, she showed functional improvement in shoulder rotation range and activities of daily living. Participant also reported enhanced ability to move the affected arms, large range of motion and feeling of control, and ability to perform daily tasks.

P21	N/A	N/A	Participants reported the systems to be convenient, enhance their mobility and mood, and served as an outlet for their physical and mental tension. However, they found it inconvenient to place the device and faced occasional technical issues.
(Cherry et al. 2017 ³²)			
P22 (Holden et al. 2007 ³³)	Fugl-Mayer-UE, Wolf Motor, shoulder flexion strength, grip strength	A1: pre-training A2: post-15 sessions A3: post-30 sessions, A4: four months follow-up	Participants demonstrated significant improvements in Fugl-Meyer and Wolf motor test and a trend of improvement for grip strength. The improvement were mostly maintained at four-months follow-up.
P23 ³⁴ (Carey et al. 2007)	Box and Block test, Jebsen Taylor test, and finger range of motion, along with a finger-tracking activation paradigm during fMRI.	A1: pretest A2: posttest A3: follow-up	The track group demonstrated significant improvement in all behavioral tests; the move group showed improvement in the Box and Block and Jebsen Taylor tests.
P24 (Brokaw et al. 2015 ³⁵)	Stroke Impact Scale-16, Fugl Meyer, Jebsen Taylor	A1: before-training A2: after-training	The participant has demonstrated improvement on all the measures after one month of use.
P25 (Kim et al. 2015 ³⁶)	Modified Ashworth Scale, Box and Blocks test, FMA-UE, Arm Motor Ability Test, and Motor Activity Log-Amount of Use and Motor Activity Log-How Well subscales	A1: before-training A2: after-training but before the home program A3: after the home-based program A4: 12-week follow-up after the home program	Participants showed significant improvement on the measures of FMA-UE, MAL-AOU, MAL-AOU

Table 4: Study measures and outcomes

Conclusion

This systematic review provides taxonomy of home-based rehabilitation technologies designed for stroke patients: games, telerehabilitation, robotic devices, virtual reality, sensors, and tablets. Based on the analysis of the user studies, home-based technologies for rehabilitation could offer multiple benefits: improving patients' motor skills, offering equivalent rehabilitation quality as conventional therapies, enhancing patients' activities of daily living, providing patients a sense of control of rehabilitation and the convenience to perform rehabilitation at home. The main challenges of home-based rehabilitation technologies for stroke include the occasionally insufficient consideration of complex factors in the home environment. Therefore, for rehabilitation that provide external and internal motivation and for the home environment such as the social context, practical challenges, and technical barriers designing proposed.

Summary

What was already known on the topic?

- Information technologies systems designed for stroke rehabilitation.
- Systematic review on using robotics, virtual reality devices, games, sensors for stroke rehabilitation.

What this study added to our knowledge?

- A taxonomy of information home-based rehabilitation technologies that are potential in offering stroke.
- Designing for motivation and home environment as important requirements for home-based rehabilitation technologies for stroke patients.

References

1. Stroke Information | cdc.gov. <https://www.cdc.gov/stroke/index.htm>. Accessed October 26, 2017.
2. Kwakkel G, Kollen BJ, Krebs HI. Effects of robot-assisted therapy on upper limb recovery after stroke: a systematic review. *Nnr*. 2007;1-11. doi:10.1177/1545968307305457.
3. Prange GB, Jannink MJ a, Groothuis-Oudshoorn CGM, Hermens HJ, Ijzerman MJ. Systematic review of the effect of robot-aided therapy on recovery of the hemiparetic arm after stroke. *J Rehabil Res Dev*. 2006;43(2):171-184. doi:10.1682/JRRD.2005.04.0076.
4. Sivan M, O'Connor RJ, Makower S, Levesley M, Bhakta B. Systematic review of outcome measures used in the evaluation of robot-assisted upper limb exercise in stroke. *J Rehabil Med*. 2011;43(3):181-189. doi:10.2340/16501977-0674.
5. Pascual-Leone A. Training modalities in robot-mediated upper limb rehabilitation in stroke: a framework for classification based on a systematic review. *J Neuroeng Rehabil*. 2014;11(1):111. doi:10.1186/1743-0003-11-111.
6. Sheng B, Zhang Y, Meng W, Deng C, Xie S. Bilateral robots for upper-limb stroke rehabilitation: State of the art and future prospects. *Med Eng Phys*. 2016;38(7):587-606. doi:10.1016/j.medengphy.2016.04.004.
7. King M, Hijmans J, Sampson M, Satherley J, Hale L. Bilateral movement training with computer games for stroke rehabilitation. *Proc 4th Int Conv Rehabil Eng & Assist Technol (iCREATE '10)*. 2010:Article 20, pp 1-4. doi:j.jns.2006.01.005.
8. Swinnen E, Beckwée D, Meeusen R, Baeyens J-P, Kerckhofs E. Does robot-assisted gait rehabilitation improve balance in stroke patients? A systematic review. *Top Stroke Rehabil*. 2014;21(2):87-100. doi:10.1310/tsr2102-87.

9. Geroin C, Mazzoleni S, Smania N, et al. Systematic review of outcome measures of walking training using electromechanical and robotic devices in patients with stroke. *J Rehabil Med.* 2013;45(10):987-996. doi:10.2340/16501977-1234.
10. Rubin MN, Wellik KE, Channer DD, Demaerschalk BM. Systematic review of telestroke for post-stroke care and rehabilitation. *Curr Atheroscler Rep.* 2013;15(8). doi:10.1007/s11883-013-0343-7.
11. Johansson T, Wild C. Telerehabilitation in stroke care - a systematic review. *J Telemed Telecare.* 2011;17(1):1-6. doi:10.1258/jtt.2010.100105.
12. Lohse KR, Hilderman CGE, Cheung KL, Tatla S, Van Der Loos HFM. Virtual reality therapy for adults post-stroke: A systematic review and meta-analysis exploring virtual environments and commercial games in therapy. *PLoS One.* 2014;9(3). doi:10.1371/journal.pone.0093318.
13. Chen J, Jin W, Zhang X-X, Xu W, Liu X-N, Ren C-C. Telerehabilitation approaches for stroke patients: Systematic review and meta-analysis of randomized controlled trials. *J stroke Cerebrovasc Dis.* 2015;24(12):2660-2668. doi:10.1016/j.jstrokecerebrovasdis.2015.09.014.
14. Henderson A, Korner-Bitensky N, Levin M. Virtual Reality in Stroke Rehabilitation: A Systematic Review of its Effectiveness for Upper Limb Motor Recovery. *Top Stroke Rehabil.* 2007;14(2):52- 61. doi:10.1310/tsr1402-52.
15. de Rooij IJM, van de Port IGL, Meijer J-WG. Effect of Virtual Reality Training on Balance and Gait Ability in Patients With Stroke: Systematic Review and Meta-Analysis. *Phys Ther.* 2016;96(12):1905-1918. doi:10.2522/ptj.20160054.
16. Moreira MC, de Amorim Lima AM, Ferraz KM, Benedetti Rodrigues MA. Use of virtual reality in gait recovery among post stroke patients – a systematic literature review. *Disabil Rehabil Assist Technol.* 2013;8(5):357-362. doi:10.3109/17483107.2012.749428.
17. Luque-Moreno C, Ferragut-Garcías A, Rodríguez-Blanco C, et al. A Decade of Progress Using Virtual Reality for Poststroke Lower Extremity Rehabilitation: Systematic Review of the Intervention Methods. *Biomed Res Int.* 2015;2015. doi:10.1155/2015/342529.

18. Rodrigues-Baroni JM, Nascimento LR, Ada L, Teixeira-Salmela LF. Walking training associated with virtual reality-based training increases walking speed of individuals with chronic stroke: systematic review with meta-analysis. *Brazilian J Phys Ther.* 2014;18(6):502-512. doi:10.1590/bjpt-rbf.2014.0062.
19. Bonnechère B, Jansen B, Omelina L, Van Sint Jan S. The use of commercial video games in rehabilitation: a systematic review. *Int J Rehabil Res.* 2016;277-290. doi:10.1097/MRR.000000000000190.
20. Webster D, Celik O. Systematic review of Kinect applications in elderly care and stroke rehabilitation. *J Neuroeng Rehabil.* 2014;11:108. doi:10.1186/1743-0003-11-108.
21. Dos Santos LRA, Carregosa AA, Masruha MR, et al. The Use of Nintendo Wii in the Rehabilitation of Poststroke Patients: A Systematic Review. *J Stroke Cerebrovasc Dis.* 2015;24(10):2298-2305. doi:10.1016/j.jstrokecerebrovasdis.2015.06.010.
22. Linder SM, Reiss A, Buchanan S, et al. Incorporating robotic-assisted telerehabilitation in a home program to improve arm function following stroke. *J Neurol Phys Ther.* 2013;37(3):125-132. doi:10.1097/NPT.0b013e31829fa808.
23. Wolf SL, Sahu K, Bay RC, et al. The HAAPI (Home Arm Assistance Progression Initiative) Trial: A Novel Robotics Delivery Approach in Stroke Rehabilitation. *Neurorehabil Neural Repair.* 2015;29(10):958-968. doi:10.1177/1545968315575612.
24. Donoso Brown E V., Dudgeon BJ, Gutman K, Moritz CT, McCoy SW. Understanding upper extremity home programs and the use of gaming technology for persons after stroke. *Disabil Health J.* 2015;8(4):507-513. doi:10.1016/j.dhjo.2015.03.007.
25. Brown EVD, Otr L, McCoy SW, et al. A Preliminary Investigation of an Electromyography-controlled Video Game as a Home Program for Persons in the Chronic Phase of Stroke Recovery. 2015;95(8):1461-1469. doi:10.1016/j.apmr.2014.02.025.A.

26. Proffitt R, Lange B. Feasibility of a Customized, in-Home, Game- Based Stroke Exercise Program Using the Microsoft Kinect® Sensor. *Int J Telerehabilitation @BULLET*. 2015;75195(210). doi:10.5195/ijt.2015.6177.
27. Langan J, DeLave K, Phillips L, Pangilinan P, Brown SH. Home-based telerehabilitation shows improved upper limb function in adults with chronic stroke: A pilot study. *J Rehabil Med*. 2013;45(2):217-220. doi:10.2340/16501977-1115.
28. Zhang H, Austin H, Buchanan S, Herman R, Koeneman J, He J. Feasibility studies of robot- assisted stroke rehabilitation at clinic and home settings using RUPERT. *IEEE Int Conf Rehabil Robot*. 2011. doi:10.1109/ICORR.2011.5975440.
29. Flynn S, Palma P, Bender A. Feasibility of using the Sony PlayStation 2 gaming platform for an individual poststroke: a case report. *J Neurol Phys Ther*. 2007;31(4):180-189. doi:10.1097/NPT.0b013e31815d00d5.
30. Proffitt RM, Alankus G, Kelleher CL, Engsberg JR. Use of Computer Games as an Intervention for Stroke. *Top Stroke Rehabil*. 2011;18(4):417-427. doi:10.1310/tsr1804-417.
31. Alankus G, Proffitt R, Kelleher C y, Engsberg J. Stroke Therapy through Motion-Based Games: A Case Study. *ACM Trans Access Comput*. 2011;4(1):1-35. doi:10.1145/2039339.2039342.
32. Cherry CO, Chumbler NR, Richards K, et al. Expanding stroke telerehabilitation services to rural veterans: a qualitative study on patient experiences using the robotic stroke therapy delivery and monitoring system program. *Disabil Rehabil Assist Technol*. 2015;3107(December):1-7. doi:10.3109/17483107.2015.1061613.
33. Holden MK, Dyar TA, Dayan-Cimadoro L. Telerehabilitation using a virtual environment improves upper extremity function in patients with stroke. *IEEE Trans Neural Syst Rehabil Eng*. 2007;15(1):36-42. doi:10.1109/tnsre.2007.891388.
34. Carey JR, Durfee WK, Bhatt E, et al. Comparison of finger tracking versus simple movement training via telerehabilitation to alter hand function and cortical reorganization after stroke. *Neurorehabil Neural Repair*. 2007;21(3):216-232. doi:10.1177/1545968306292381.

35. Brokaw EB, Eckel E, Brewer BR. Usability evaluation of a kinematics focused Kinect therapy program for individuals with stroke. *Technol Heal Care*. 2015;23(2):143-151. doi:10.3233/THC-140880.
36. Kim GJ, Rivera L, Stein J. Combined Clinic-Home Approach for Upper Limb Robotic Therapy after Stroke: A Pilot Study. *Arch Phys Med Rehabil*. 2015;96(12):2243-2248. doi:10.1016/j.apmr.2015.06.019
37. Sivan M, Gallagher J, Makower S, et al. Home-based Computer Assisted Arm Rehabilitation (hCAAR) robotic device for upper limb exercise after stroke: results of a feasibility study in homesetting. *J Neuroeng Rehabil*. 2014;11(1):163. doi:10.1186/1743-0003-11-163.
38. Kirk P, Grierson M, Bodak R, et al. Motivating Stroke Rehabilitation Through Music: A Feasibility Study Using Digital Musical Instruments in the Home. *Proc 2016 CHI Conf Hum Factors Comput Syst*. 2016:1781-1785. doi:10.1145/2858036.2858376.
39. Balaam M, Rennick Egglestone S, Fitzpatrick G, et al. Motivating mobility: designing for lived motivation in stroke rehabilitation. *Proc SIGCHI Conf Hum Factors Comput Syst*. 2011:3073- 3082. doi:10.1145/1978942.1979397.
40. Standen PJ, Threapleton K, Connell L, et al. A low cost virtual reality system for home based rehabilitation of the upper limb following stroke: a randomised controlled feasibility trial. *Int J Stroke*. 2017;8:29. doi:10.1177/0269215516640320.
41. Standen PJ, Threapleton K, Connell L, et al. Patients' Use of a Home-Based Virtual Reality System to Provide Rehabilitation of the Upper Limb Following Stroke. *Phys Ther*. 2015;95(3):350-359. doi:10.2522/ptj.20130571.
42. Adie K, Schofield C, Berrow M, et al. Does the use of Nintendo Wii Sports™ improve arm function? Trial of Wii™ in Stroke: A randomized controlled trial and economics analysis. *Clin Rehabil*. 2016. doi:10.1177/0269215516637893.

43. Wingham J, Adie K, Turner D, Schofield C, Pritchard C. Participant and caregiver experience of the Nintendo Wii Sports™ after stroke: qualitative study of the trial of Wii™ in stroke (TWIST). *Clin Rehabil*. 2015;29(3):295-305. doi:10.1177/0269215514542638.
44. Nijenhuis SM, Prange GB, Amirabdollahian F, et al. Feasibility study into self-administered training at home using an arm and hand device with motivational gaming environment in chronic stroke. *J Neuroeng Rehabil*. 2015;12(1):89. doi:10.1186/s12984-015-0080-y.
45. Basteris A, Amirabdollahian F. Movement recognition and preference in home-based robot-assisted stroke rehabilitation. *Proc - REHAB 2014*. 2014:432-435. doi:10.4108/icst.pervasivehealth.2014.255314.
46. Nijenhuis SM, Prange-Lasonder GB, Stienen AH, Rietman JS, Buurke JH. Effects of training with a passive hand orthosis and games at home in chronic stroke: a pilot randomised controlled trial. *Clin Rehabil*. 2016;269215516629722. doi:10.1177/0269215516629722.
47. Lemmens RJM, Timmermans AAA, Janssen-Potten YJM, et al. Accelerometry measuring the outcome of robot-supported upper limb training in chronic stroke: A randomized controlled trial. *PLoS One*. 2014;9(5). doi:10.1371/journal.pone.0096414.
48. Backlund P, Taylor A-SA, Engström H, et al. Evaluation of Usefulness of the Elinor Console for Home-Based Stroke Rehabilitation. *2011 Third Int Conf Games Virtual Worlds Serious Appl*. 2011:98-103. doi:10.1109/VS-GAMES.2011.20.
49. Slijper A, Svensson KE, Backlund P, Engström H, Sunnerhagen KS. Computer game-based upper extremity training in the home environment in stroke persons: a single subject design. *J Neuroeng Rehabil*. 2014;11:35. doi:10.1186/1743-0003-11-35.
50. Palmcrantz S, Borg J, Sommerfeld D, et al. An interactive distance solution for stroke rehabilitation in the home setting - A feasibility study. *Inform Health Soc Care*. 2016;8157(February 2017):1-18. doi:10.1080/17538157.2016.1253015.

51. Piron L, Tonin P, Trivello E, Battistin L, Dam M. Motor tele-rehabilitation in post-stroke patients. *Med Inform Internet Med.* 2004;29(2):119-125. doi:10.1080/14639230410001723428.
52. Piron L, Turolla A, Tonin P, Piccione F, Lain L, Dam M. Satisfaction with care in post-stroke patients undergoing a telerehabilitation programme at home. *J Telemed Telecare.* 2008;14(5):257-260. doi:10.1258/jtt.2008.080304.
53. Wittmann F, Held JP, Lamercy O, et al. Self-directed arm therapy at home after stroke with a sensor-based virtual reality training system. *J Neuroeng Rehabil.* 2016;13(1):75. doi:10.1186/s12984-016-0182-1.
54. Jordan K, Sampson M, King M. Gravity-supported exercise with computer gaming improves arm function in chronic stroke. *Arch Phys Med Rehabil.* 2014;95(8):1484-1489. doi:10.1016/j.apmr.2014.02.028.
55. Chen J, Jin W, Dong WS, et al. Effects of Home-based Telesupervising Rehabilitation on Physical Function for Stroke Survivors with Hemiplegia. *Am J Phys Med Rehabil.* 2016;96(3):1. doi:10.1097/PHM.0000000000000559.
56. Chang WH, Kim Y-H. Robot-assisted Therapy in Stroke Rehabilitation. *J stroke.* 2013;15(3):174-181. doi:10.5853/jos.2013.15.3.174.
57. Ameer K, Ali K. iPad Use in Stroke Neuro-Rehabilitation. *Geriatrics.* 2017;2(1):2. doi:10.3390/geriatrics2010002.
58. Frost JH, Massagli MP. Social Uses of Personal Health Information Within PatientsLikeMe, an Online Patient Community: What Can Happen When Patients Have Access to One Another's Data. *J Med Internet Res.* 2008;10(3):e15. doi:10.2196/jmir.1053.